

Alexander Wolodtschenko

# Selected Cartosemiotic Phantoms

## Meta-Photoatlas



Dresden  
2023

# Table of contents

1. Preface	3
2. Structure model of meta-photoatlas	4
3. Photoatlases with “cartosemiotic phantoms”	5
3.1. “Cartosemiotics and prehistoric maps”	6-8
3.2. “Prehistoric signs and artifacts”	9-11
3.3. „Ausgewählte „kartosemiotische Phantome“ (Kiesel-Steine) in der Natur“	12-15
3.4. Selected „cartosemiotic phantoms“	16-19
4. Selected „Spider maps”	20-22
5. Conclusion	23
6. Imprint and photo sources	24
7. About the author of meta-photoatlas	25

# 1. Preface

This photoatlas was conceived as a synthesis meta-photoatlas (a photoatlas about others ones) based on the materials of the book and mini-atlas “Prehistoric maps and sign systems” (Wolodtschenko 2015) and three photoatlases with “cartosemiotic phantoms”, which were presented as thematic picture atlases from A. Wolodtschenko's photoatlas library:

<https://atlas-semiotics.jimdofree.com/bild-atlantothek/>

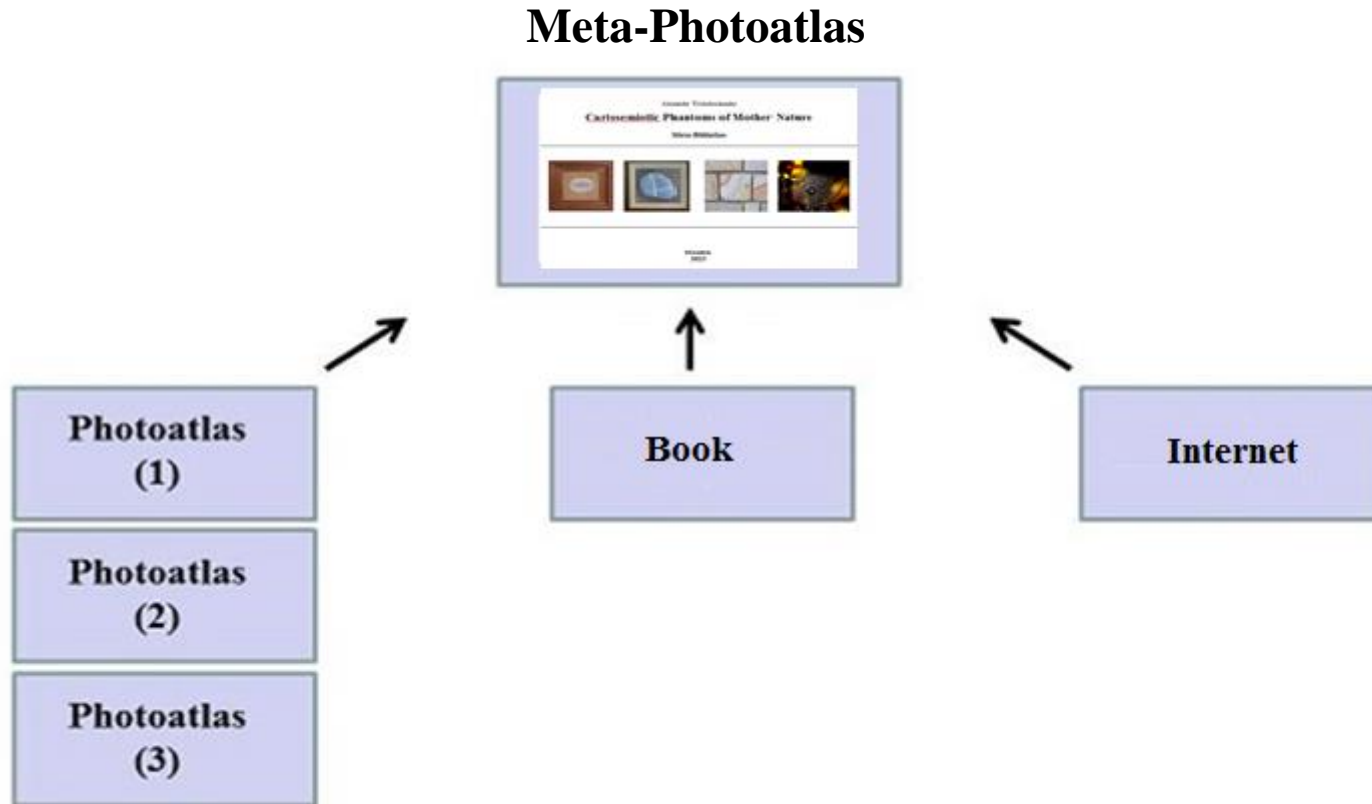
These examples of thematic picture atlases are based on:

- cartosemiotic petroglyphs as fragments of prehistoric maps
- linear images on pebble stones
- linear signs, areas and isolines (like some cartographic methods of presentation) on decorative sandstone tiles.

The fourth example of map-like phantoms as a new cartosemiotic construction "spider map" is based on the cobweb. The cobweb is used not only for hunting, but also for locomotion and navigation of spiders. The cobweb is a network of thin threads, not only an engineering design created by nature, but also a real work of art. This is one of the new examples of cartosemiotic phantoms created by not man.

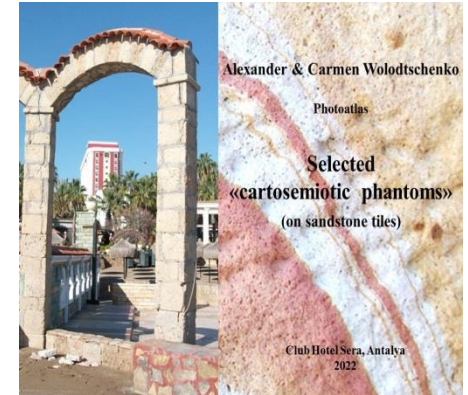
All examples of cartosemiotic phantoms considered in this photoatlas are images without text. The semantics of such images is explained by the text from the author as comments.

## 2. Structure model of photoatlas



Meta-Photoatlas is a photoatlas as synthesis model about others photoatlases, etc.

### 3. Photoatlases with “cartosemiotic phantoms”



Title slide of the photoatlases:

“Prehistoric maps and sign systems” (2015, in Russ.)

“Prehistoric signs and artifacts” (2015, in Russ.)

„Ausgewählte „kartosemiotische Phantome“ (Kiesel-Steine) in der Natur“ (2021, in German)

Selected „cartosemiotic phantoms“ (2022)

### 3. 1. Photoatlases with “cartosemiotic phantoms” “Prehistoric maps and sign systems” (2015)




Title slide of the book and mini-atlas “Prehistoric maps and sign systems” (2015)

### 3.1. Photoatlases with “cartosemiotic phantoms” “Prehistoric maps and sign systems” (2015)

The picture atlas presents selected prehistoric maps as well as some examples of cartosemiotic sign systems from Europe. The photoatlas is aimed at cartographers, geographers, map semioticians, map historians and anyone interested in the semiotic roots of cartography, thematic mini-atlases and their information-semiotic properties.

#### Themes of primitive art

zoomorphic	anthropomorphic	cartosemiotic	others
			

A mini-photoatlas as a multifunctional product for a specific group of users differs from a photo album and a photo gallery by a high degree of information-semiotic organization (consistency, thematization, structure, completeness, generalization, selection, combination, etc.). Such mini-photoatlases with various themes of mini-exhibitions have a good chance of becoming a popular product in the modern information society.



### 3. 1. Photoatlases with “cartosemiotic phantoms” “Prehistoric maps and sign systems” (2015)

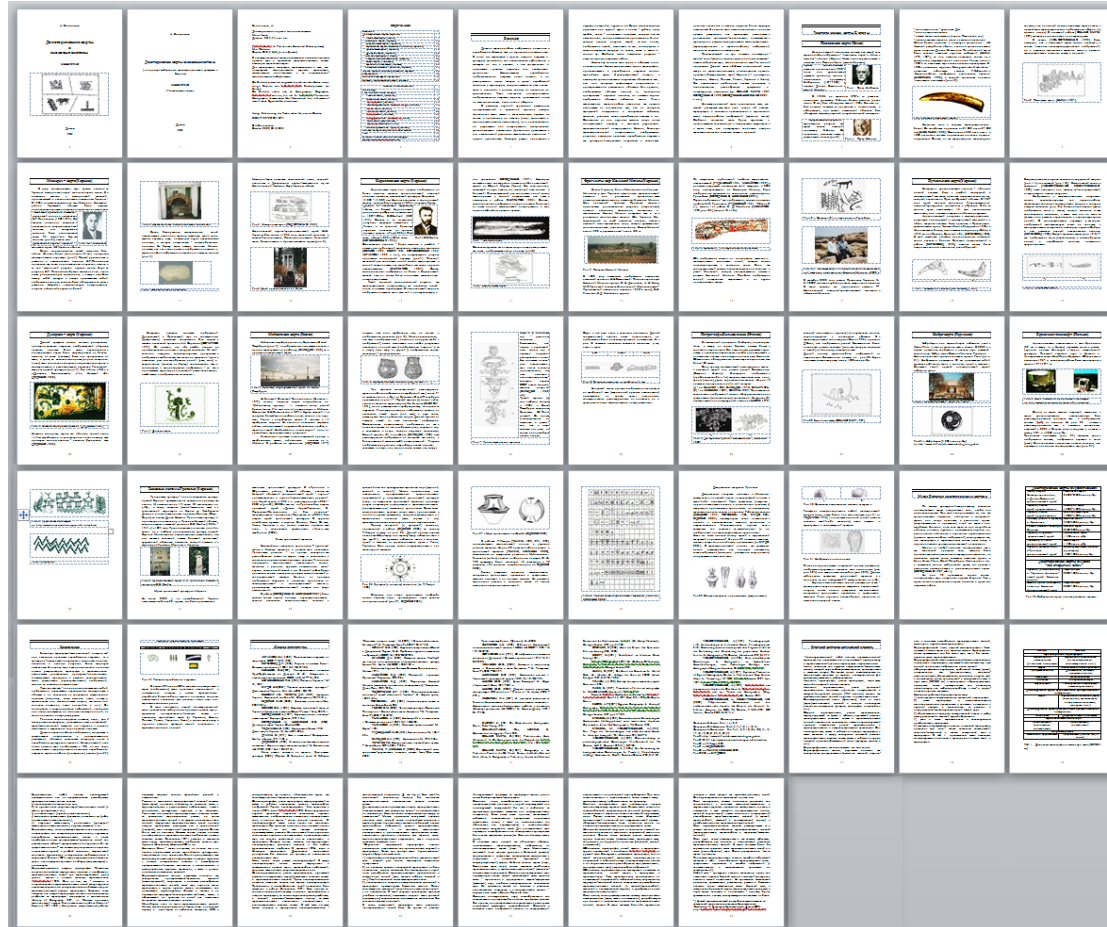


Photo gallery of the book and mini-atlas “Prehistoric maps and sign systems” (2015)



### 3.2. Photoatlases with “cartosemiotic phantoms” “Prehistoric signs and artifacts” (2015)



Title slide of the photoatlas “Prehistoric signs and artifacts” (2015)

### 3.2. Photoatlases with “cartosemiotic phantoms” “Prehistoric signs and artefacts” (2015)

This photoatlas with the concept design of a mini-exhibition includes selected iconic miniature fragments of several prehistoric maps as artifacts.

The photoatlas "Prehistoric signs and artifacts" demonstrates the connection of the history of cartography, atlas semiotics and cartosemiotics with a new concept-function of a virtual exhibition.



Nebra-map (3 200 v.Ch.) from [http://www.lda-lsa.de/himmelsscheibe\\_von\\_nebra/](http://www.lda-lsa.de/himmelsscheibe_von_nebra/)

### 3. 2.Photoatlases with “cartosemiotic phantoms” “Prehistoric signs and artefacts” (2015)

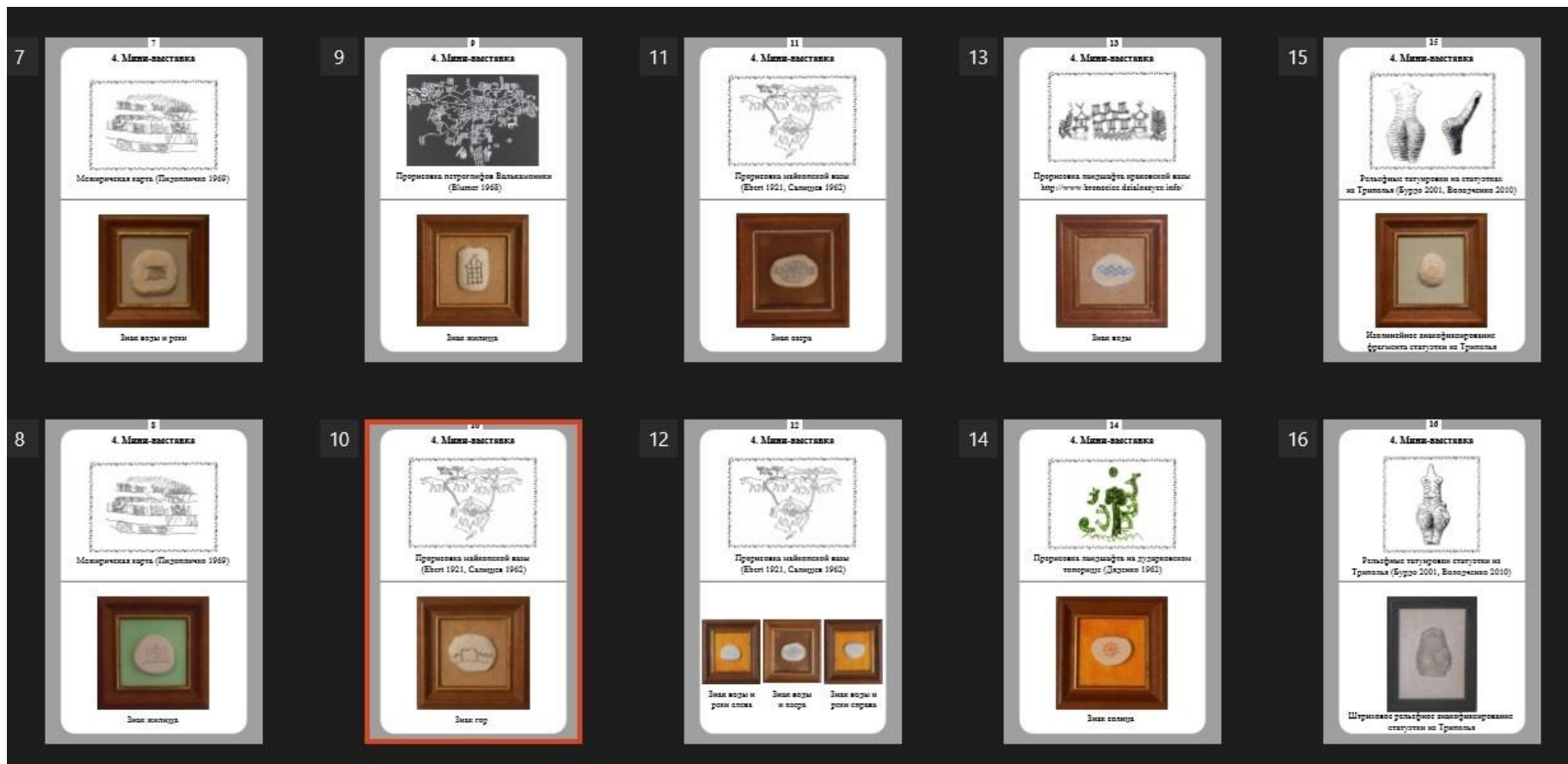


Photo gallery of the photoatlas “Prehistoric signs and artefacts” (2015)

### 3.3. Photoatlases with “cartosemiotic phantoms”

Ausgewählte „kartosemiotische Phantome“ (Kiesel-Steine) in der Natur (2021)



Title slide of photoatlas

### 3.3. Photoatlases with “cartosemiotic phantoms”

„Ausgewählte „kartosemiotische Phantome“ (Kiesel-Steine) in der Natur“ (2021)

The picture atlas “Ausgewählte „kartosemiotische Phantome“ presents selected “cartosemiotic phantoms” in nature, selected linear motifs (pictures) on the pebbles. The pebbles are not maps or map sections. They are just "cartosemiotic phantoms" of Mother Nature.

Five groups of linear motifs (images) were formed on the pebbles with line elements (lines/stripes, line crossings, line network, area and isolines) and presented in the photoatlas. The pebbles reflect only fragments of linear structures that can be found in some topographical or thematic maps.



The pebble stones can be distinguished according to design variables such as shape, color, size, etc. The photoatlas presents selected artefacts of nature (in mini-exhibition format) using cartographic methods of presentation (linear signatures, areas and isolines).



### 3.3. Photoatlases with “cartosemiotic phantoms”

Ausgewählte „kartosemiotische Phantome“ (Kiesel-Steine) in der Natur (2021)

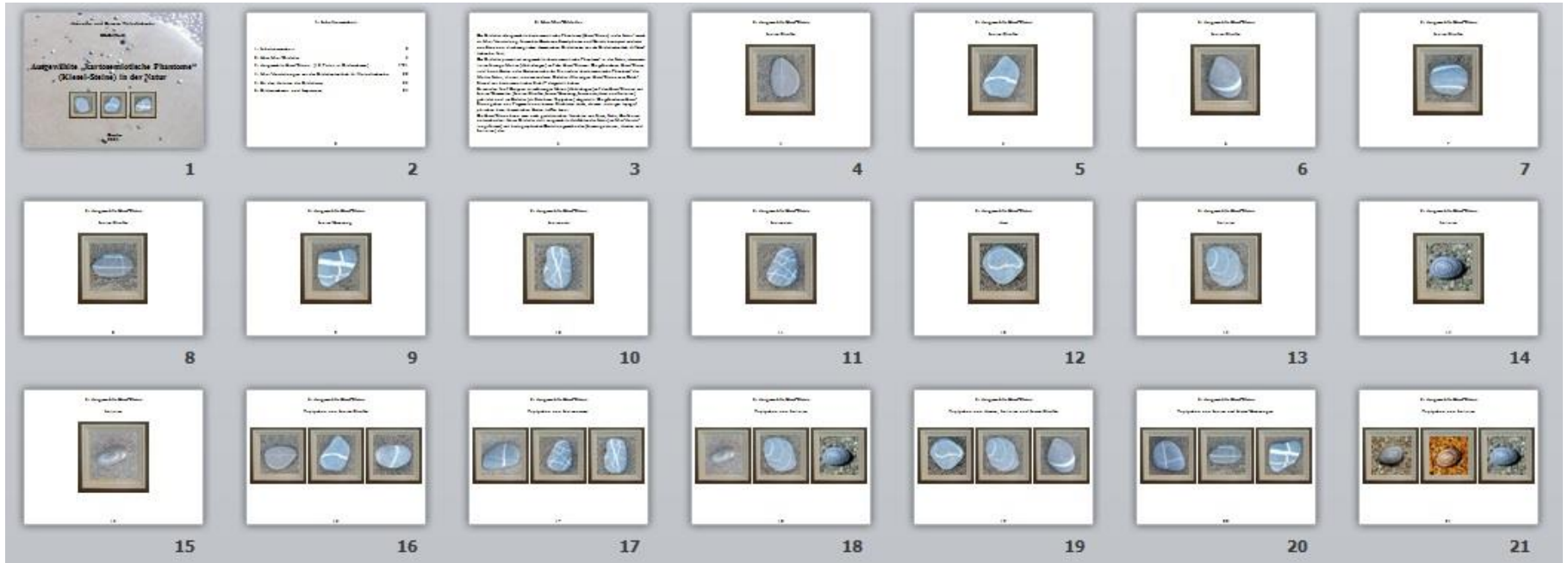


Photo gallery of the photoatlas “Ausgewählte „kartosemiotische Phantome“ (Kiesel-Steine) in der Natur ” (2021)

### 3.3. Photoatlases with “cartosemiotic phantoms”

Ausgewählte „kartosemiotische Phantome“ (Kiesel-Steine) in der Natur (2021)

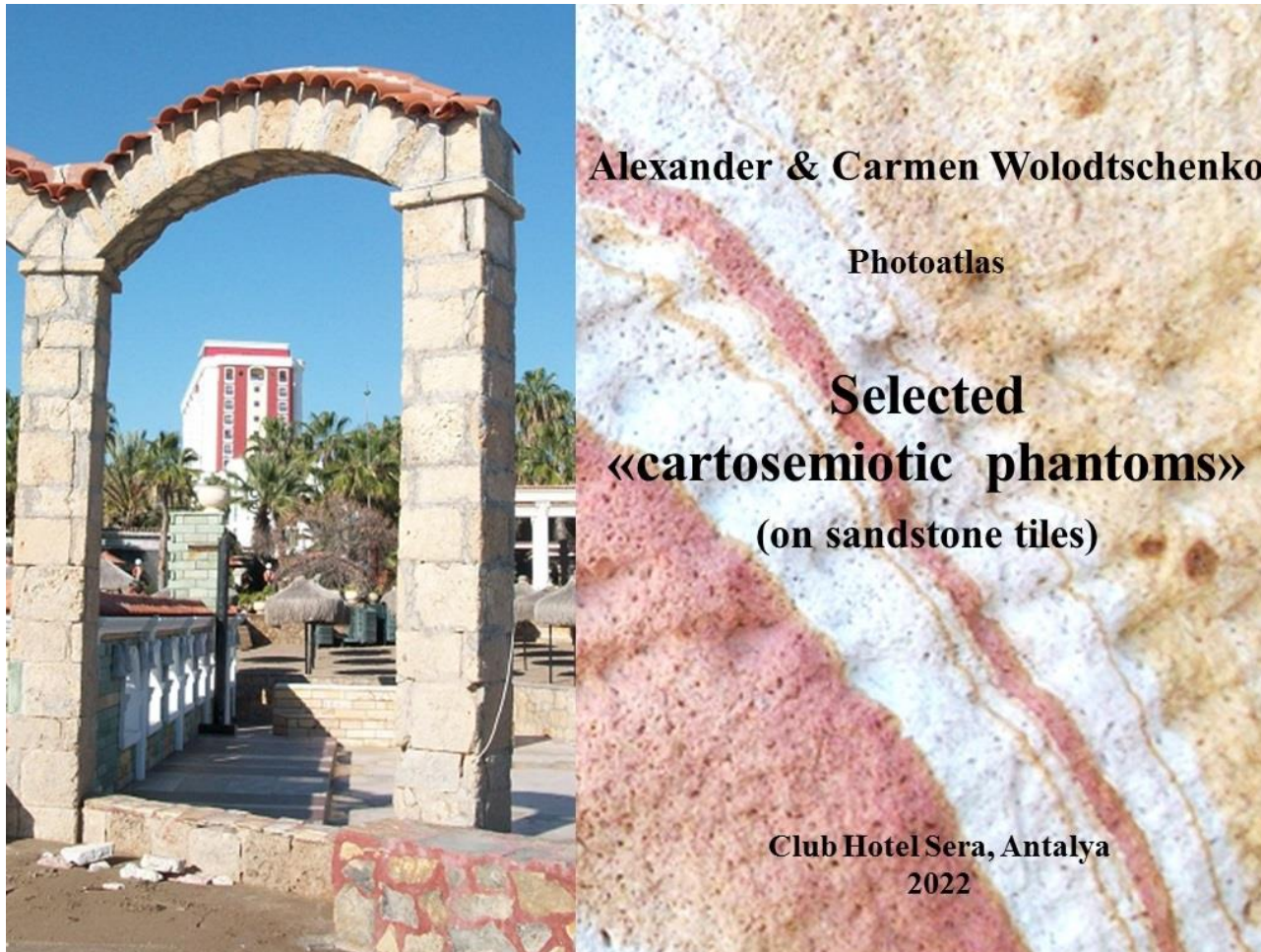


Pebbles with drawings were collected in December 2021 on the beach at the Atlantis Hotel after a strong storm in the Antalya-Belek region (Turkey)



### 3.4. Photoatlases with “cartosemiotic phantoms”

Selected „cartosemiotic phantoms“ (2022)



Title slide of photoatlas

### 3.4. Photoatlases with “cartosemiotic phantoms”

#### Selected „cartosemiotic phantoms“ (2022)

The photoatlas Selected „cartosemiotic phantoms“ (2022) continues a series of thematic photoatlases from the atlas collection of A. Wolodtschenko. The photoatlas also continues the topic “Cartosemiotic phantoms in nature”, which has already been presented in our other photoatlas:

„Ausgewählte „kartosemiotische Phantome“ (Kiesel-Steine) in der Natur“

<https://atlas-semiotics.jimdofree.com/app/download/12161634797/Mini-Ausstellung-2021.pdf>

The photoatlas shows only selected artifacts of nature with a similarity to some cartographic methods of presentation (linear signs, areas and isolines).



The photoatlas presents selected “cartosemiotic phantoms” on decorative sandstone tiles as linear and area motifs (images) that are found on real geographical maps.

### 3.4. Photoatlases with “cartosemiotic phantoms” Selected „cartosemiotic phantoms“ (2022)



The decorative tiles were photographed in Club Hotel Sera in Antalya (December 2022)



### 3.4. Photoatlases with “cartosemiotic phantoms”

Selected „cartosemiotic phantoms“ (2022)

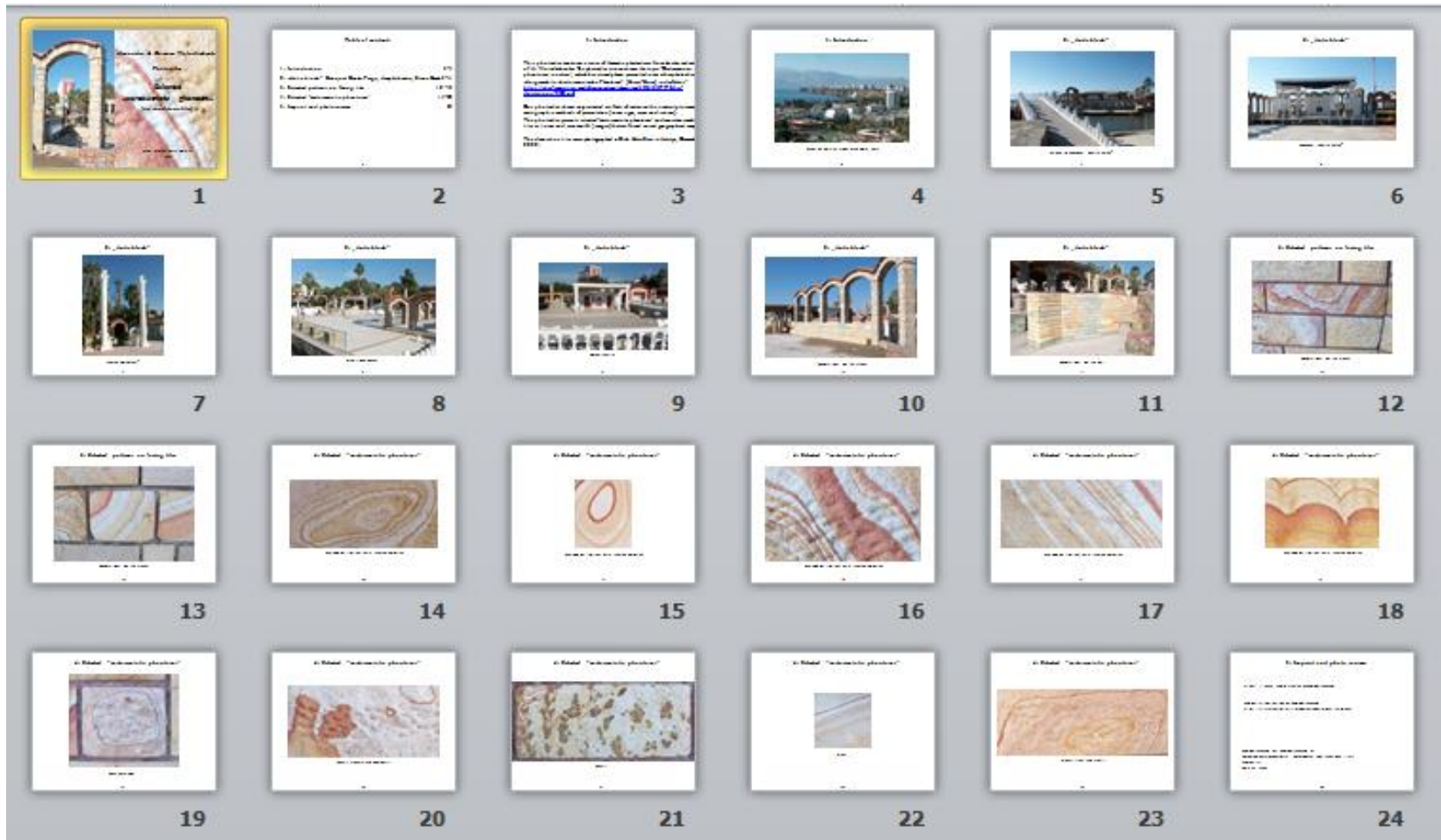


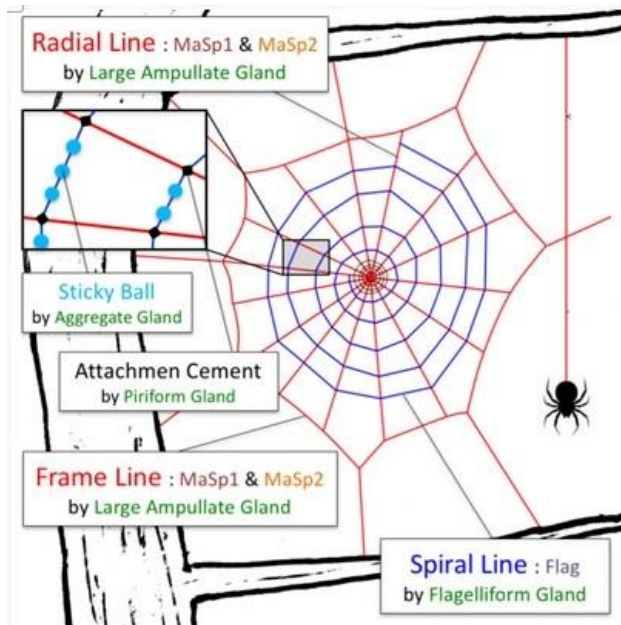
Photo gallery of the photoatlas

## 4. Selected „Spider maps”

The cobweb „spider map” is one of the new examples of cartosemiotic phantoms created by nature and not man.

From a cartographic point of view, spider web as a graphic model does not apply to maps, because it was not created by people and not for people (and robots with AI) and is not intended for their use.

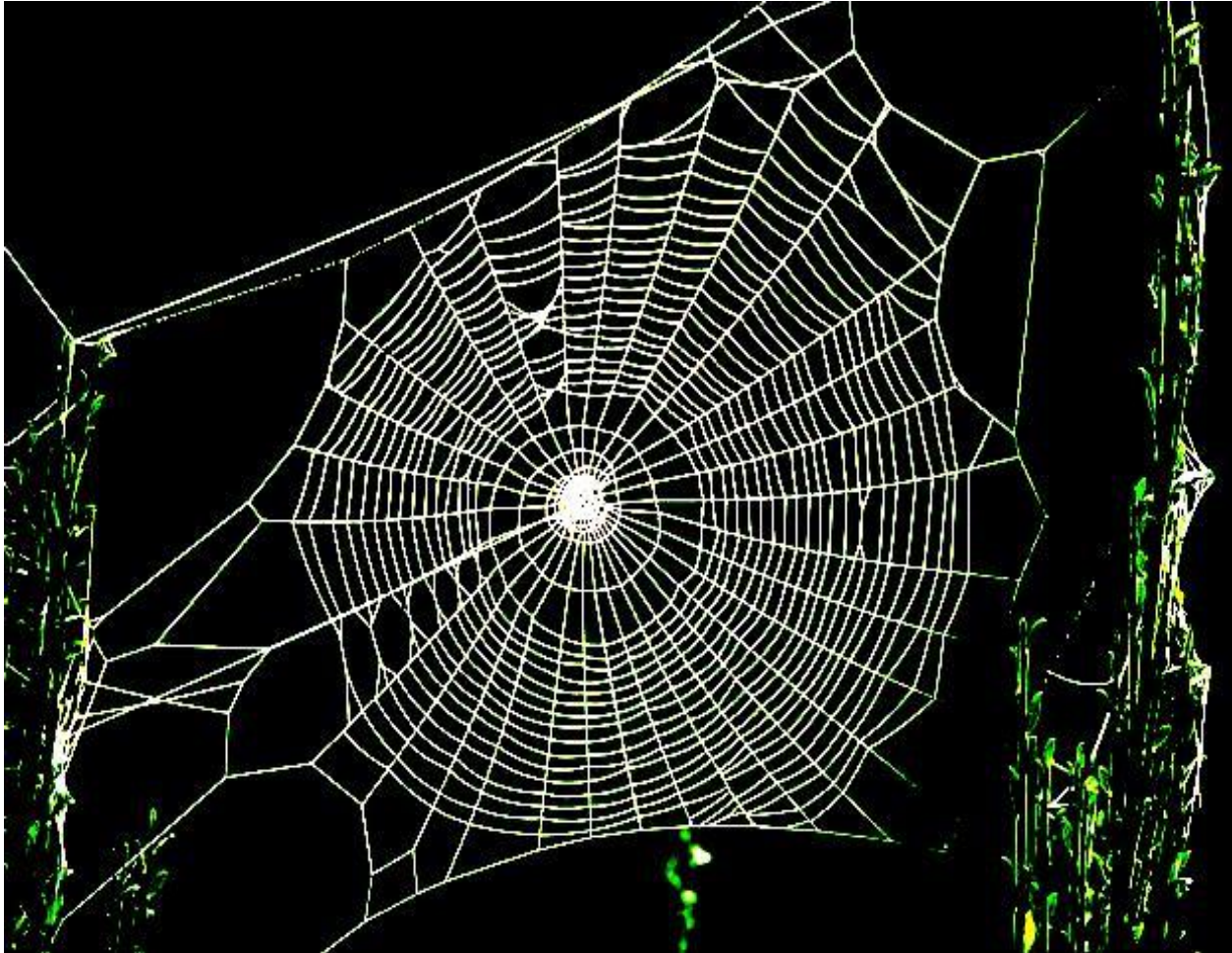
From a cartosemiotic point of view, spider web as one of the types of spatial models for navigation and movement of spiders. The graphical models of spider web with radial-spiral lines can resemble the road network of large cities.



Schematic model of spider orb web from:  
[https://en.wikipedia.org/wiki/Spider\\_silk](https://en.wikipedia.org/wiki/Spider_silk)

The red lines represent the dragline, radial line, and frame lines, the blue lines represent the spiral line, and the centre of the orb web is called the "hub"

## 4. Selected „Spider maps”



This cobweb is available from:

[https://web-zoopark.ru/nasekomie/iz\\_chego\\_pauk\\_pryadet\\_svoyu\\_pautinu.html](https://web-zoopark.ru/nasekomie/iz_chego_pauk_pryadet_svoyu_pautinu.html)



## 4. Selected „Spider maps”



This cobweb is available from:  
[https://pl.wikipedia.org/wiki/Ni%C4%87\\_prz%C4%99dna](https://pl.wikipedia.org/wiki/Ni%C4%87_prz%C4%99dna)



## 5. Conclusion

The beginning of the 2020s was marked by the emergence of a new metascientific direction in the family of metasciences – metaatlasgraphy (Wolodtschenko 2022). The term is completely new and is also derived from the new term atlasography.

Metaatlasgraphy forms new views and positions on the role of atlasgraphy in the study of atlases as basic semiotic-epistemological models with cartographic and non-cartographic traditions. Metaatlasgraphy reflects the evolutionary processes of transformation of knowledge from map to atlas, from mapping to atlassing and photoatlassing, from cartosemiotics to atlas semiotics, from the language of maps to the language of atlases, from graphic (syntactic) variables to semiotic atlas metavariables, etc.

This meta-photoatlas “Selected Cartosemiotic Phantoms” reflects the meta-atlasgraphic trends. The meta-photoatlas was created at the intersection of the history of maps, semiotics of maps and atlases, photoatlasgraphy, archaeology, paleogeography and other disciplines and contributes to the study of the semiosis of the earth's civilization.

The accumulation of semiotic-epistemological and meta-atlasgraphic knowledge continues. Photoatlases, meta-photoatlases and photoatlassing (Bildatlassing in German) have an interesting future, as the figurative pictorial form of thinking (bildartige Denken in German) will dominate over the linear-text-based way of thinking in the 21st century.

## 6. Imprint and photo sources

Slides 1, 4-9, 11-19, 25: Photo archive A.Wolodtschenko

Slide 10: [http://www.lda-lsa.de/himmelscheibe\\_von\\_nebra](http://www.lda-lsa.de/himmelscheibe_von_nebra)

Slide 20: from [https://en.wikipedia.org/wiki/Spider\\_silk](https://en.wikipedia.org/wiki/Spider_silk)

Slide 21: [https://web-zoopark.ru/nasekomie/iz\\_chego\\_pauk\\_pryadet\\_svoyu\\_pautinu.html](https://web-zoopark.ru/nasekomie/iz_chego_pauk_pryadet_svoyu_pautinu.html)

Slide 22: [https://pl.wikipedia.org/wiki/Ni%C4%87\\_prz%C4%99dna](https://pl.wikipedia.org/wiki/Ni%C4%87_prz%C4%99dna)

Photoatlas collection A. Wolodtschenko:

<https://atlas-semiotics.jimdofree.com/bild-atlantothek/>

Wolodtschenko A.(2022): From Metacartography to Metaatlasgraphy. Dresden 2022.

<https://nbn-resolving.de/urn:nbn:de:bsz:14-qucosa2-850427>

Wolodtschenko A.

**Selected Cartosemiotic Phantoms**

Meta-Photoatlas

Dresden 2023

## 7. About the author of meta-photoatlas



Alexander Wolodtschenko, dr. dr.h.c.  
Editor-in-chief of the cartosemiotic issue since 2020  
(1998-2019 together with H.Schlichtmann).  
Co-editor of the theoretical e\_journal <meta-carto-  
semiotics> since 2008 (together with F.Hruby).  
<http://ojs.meta-carto-semiotics.org>

Co-chairman, Sektion Umwelt- und Karto/  
Atlassemiotik, DGS  
<http://www.semiotik.eu/Oeko-und-Kartosemiotik>  
Author of ca. 150 photoatlases and 20 cartosemiotic  
monographs.  
Email: [alexander.wolodtschenko@mailbox.tu-  
dresden.de](mailto:alexander.wolodtschenko@mailbox.tu-dresden.de)